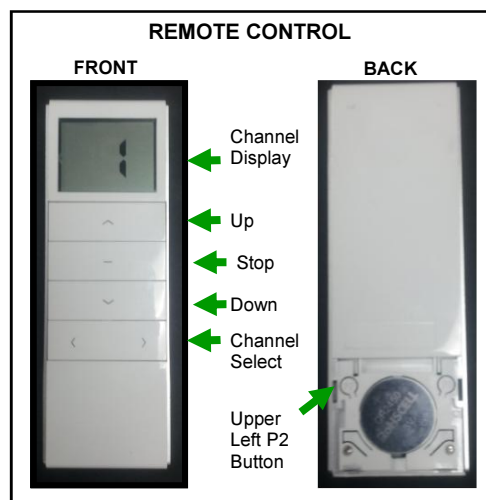


Programming Portrait™ Motorized Honeycomb Shades

This guide explains the two step process for programming motorized honeycomb shades from Portrait™. First, it requires that a shade or a group of shades is paired with 1 of the 15 channels. Second, the upper and lower limits of the shade must be set.

STEP 1: PAIR CHANNELS WITH SHADE

1. Make sure all battery packs are unplugged from the motors.
2. Start with fresh batteries for the motor battery packs. (8 x AA in each pack). Install them into each of the packs according to the diagram on the packs.
3. Ensure the remote control is powered. If powered, the channel display will display a number when any button is pushed.
4. Plug in the shades you want to be in the first group. Do not plug in the others at this time.
5. Remove the battery cover from the remote control and you should see 4 buttons that are beside the battery. Locate the UPPER LEFT P2 BUTTON. You will not need the other three buttons at this time.



6. On the remote control, select the channel you'd like to pair with the first group of shades. Do not select channel "0" as it is used to control all shades at once
7. With the correct channel selected on the remote, press the UPPER LEFT P2 BUTTON once. The shade will "respond". Press the UPPER LEFT P2 BUTTON again. It should again respond. Now press the UP key to finalize the pairing for the channel and the group. This sequence must be completed within 10 seconds.
8. If any of the buttons were pressed out of order, unplug the power pack and repeat STEP 1**.
9. Once the first group has been successfully programmed, plug in the second group of shades. Do not unplug the shades from the first group, although unplugging them will not erase the programming made for the previous group. With the correct channel selected for group 2, repeat step 7 for each group.

STEP 2: SET UP UP/DOWN SHADE LIMITS

After you have paired the shade with a channel, you must set up the up/down limits for the shade. You must set up both the upper limit AND bottom limit. You cannot just set up the top limit without finishing the up/down limits button sequence

1. Start by selecting the channel corresponding to the shades you'd like to set limits for.
2. With the correct channel selected, press the UPPER LEFT P2 BUTTON. The shade will "respond". Then press the UP button. The shade will respond. Then press the UPPER LEFT P2 BUTTON. The shade will respond.
3. Press the up button again, and wait for the shade to rise to the desired upper limit.
4. Once the upper limit has been reached, press the middle STOP BUTTON. The shade will stop.
5. Once the shade has stopped, press the STOP button 6 more times. The shade will "respond".
6. Now set the bottom limit. Press the DOWN BUTTON, and wait for the shade to lower to the desired lower limit.
7. Once the lower limit has been reached, press the STOP BUTTON. The shade will stop.
8. Once the shade has stopped, press the STOP button 6 more times. The shade will respond. The upper/lower limit has been set.
9. If any of the buttons were pressed out of order, unplug the battery pack and repeat STEP 2**.

IMPORTANT NOTE

***A shade will "respond" by automatically moving up half an inch, then down half an inch.** Please wait until shade finishes "responding" before pressing the next button.

****Sometimes, if the buttons are not pressed in sequence, the shade will not "respond" after you press the UPPER LEFT P2 BUTTON.** If this happens, first make sure that the correct channel that corresponds with the shade has been selected. If that does not solve the problem, **unplug the affected shade(s) from the battery pack for at least 45 seconds**, Then plug it in again. The shade should immediately "respond" right after it has been plugged in. If it fails to respond, unplug the shade 45 seconds and try again.